

# USB DVB-T Receiver

## Quick Installation Guide

Thanks for you purchasing USB DVB-T Receiver. The following guides you how to set up on your computer. Hope this device will bring you nice digital experience

### Installation Overview

1\* USB DVB-T receiver

1\* Extra powerful antenna

1\* software CD

Software CD with:

- . Driver for DVB-T receiver
- . HDTV Player Application

**Note:** We also attach another software in CD-Honestech TVR 3.0 RTM. You can browse CD and find the folder -"honestech" with details note.

### Connecting the USB DVB-T Receiver

Please ensure that windows XP/Vista is correctly installed and started before connecting the USB DVB-T Receiver to your computers USB 2.0 port. Due to power and bandwidth requirement, we do not recommend connecting the unit into a USB Hub. Connect the USB DVB-T Receiver to the USB connection of your computer.

### Connecting the Aerial

It is recommended to connect to a roof top aerial during the first time installation as this may provide a better signal quality than the provided portable antenna.

You will need to ensure that you are located in an area that has Digital Terrestrial coverage.

### IMPORTANT!

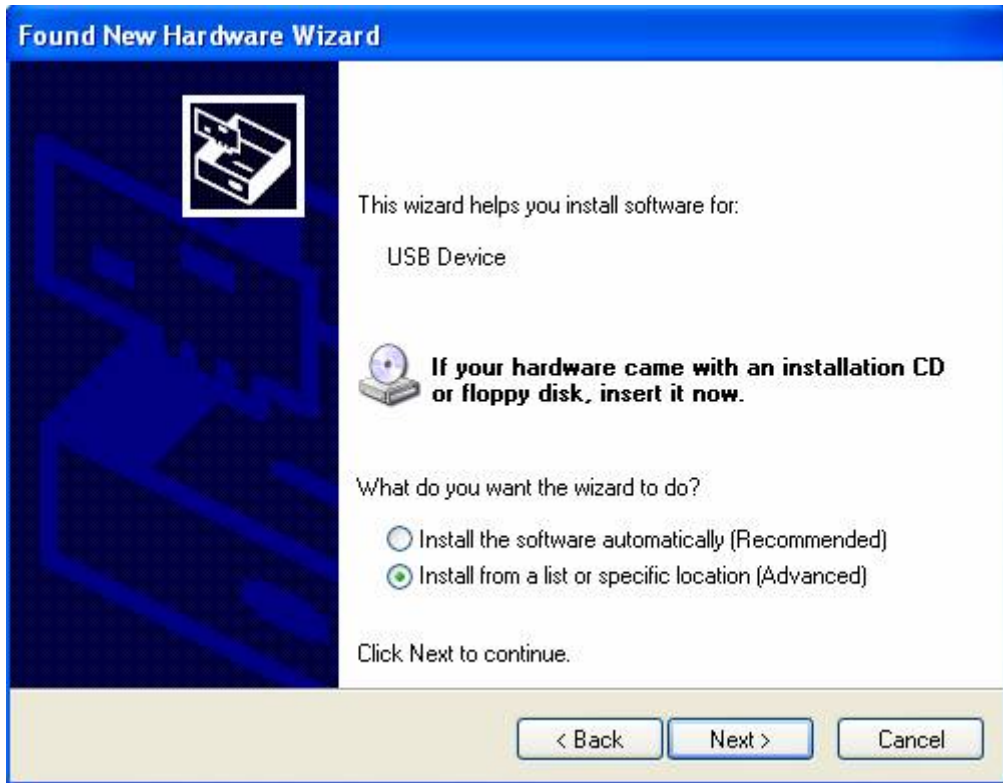
The base of the provided antenna generates a magnetic field. If you have a heart pacemaker and notice any anomalies, you should keep away from this device and seek advice from your doctor.

Always keep the antenna away from all equipment that is sensitive to electromagnetic fields, e.g. PCs, notebooks, hard drives, diskettes, credit cards etc. Improper use may result in data loss or other faults.

## Driver-Installation

**N**

ote: If you have any anti-virus software enabled, please disable it during the installation of the software.



When you first connect the USB DVB-T Receiver to your computer, a Hardware Assistant will appear, the "USB Device" will be recognized.

Insert the "HDTV Player for Windows Installations CD-ROM" into your CD drive.

Select the option "Install Driver" and click "Next".

If prompted select "No, not this time" and select "Next". Select the option "Install the software automatically" and click "Next".

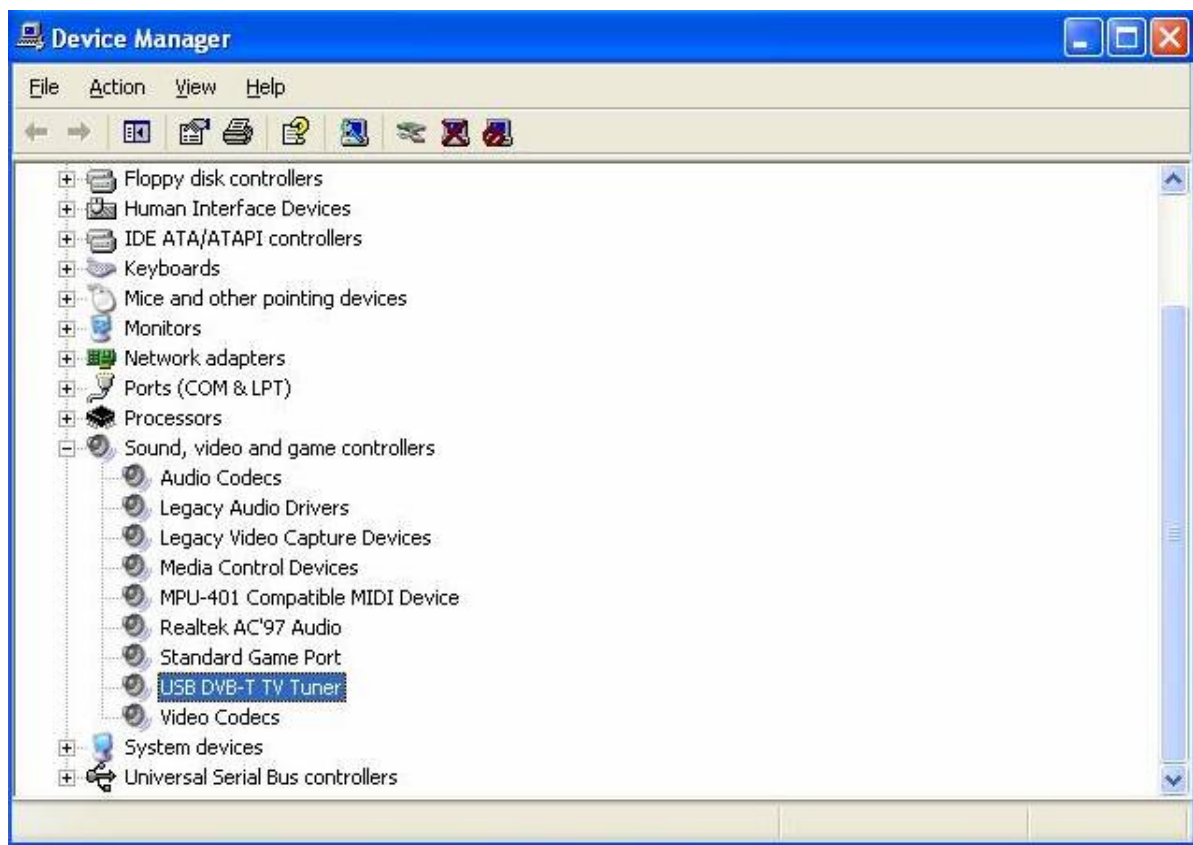
A window may appear about the "USB Device" not passing the windows logo testing, select "Continue Anyway".

When "Completing the Found New Hardware wizard" window appears click the "Finish" button to complete the driver installation.

**N**ote" If any further components are found please repeat the above process until you receive the message "Found new hardware: Your hardware is installed and configured use"

You will now need to check that the drivers are installed correctly.

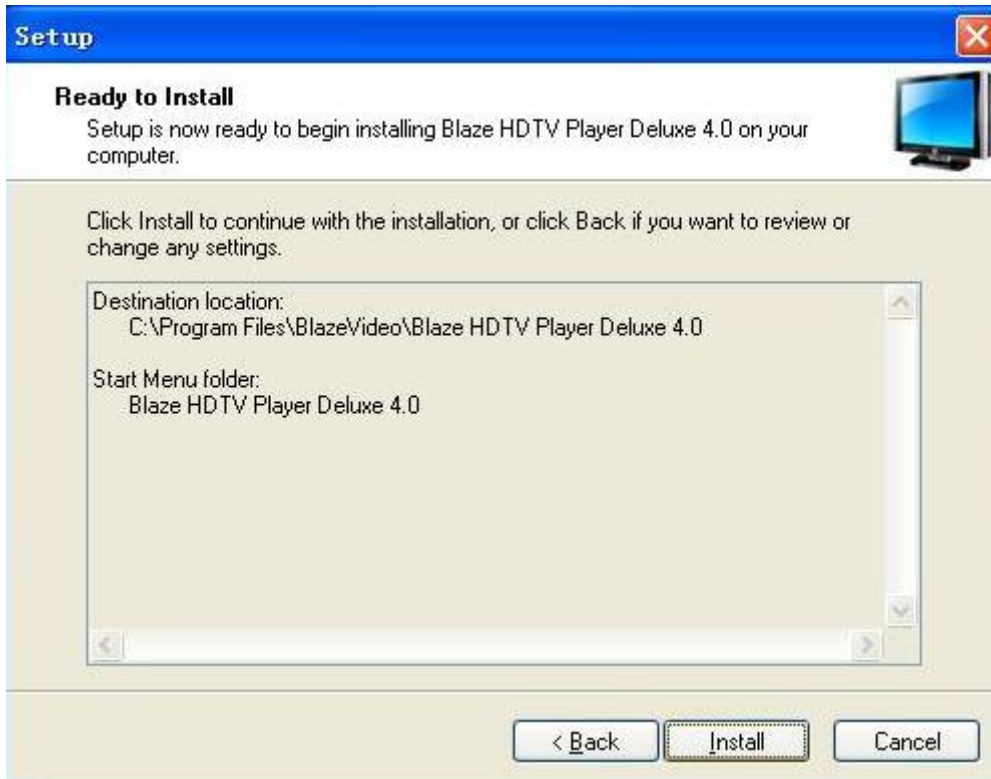
Right click on My Computer and left click on Properties. Click on Hardware tab and then Device Manager. In the Device Manager, click on the +symbol on the Sound Video and Game controllers section. If the driver is installed correctly you should see the " USB DVB-T TV Tuner" , If it has a yellow mark next to it then this means that the driver is not installed correctly. You will need to remove the driver and disconnect the- USB DVB-T Receiver from the computer and re-connect it to install the driver again.



## HDTV Player Software Installation

To start the USB DVB-T Receiver software installation, click Start / Run then type your CD-ROM drive and click "Install Blaze HDTV Player".

Select your language for the installation and Click "Next" or / and "Install".



Click "finish" to complete setup, restart your computer if needed.

Run HDTV player which you just installed, enter user name and serial number ( you can find out the serial number on driver CD bag)

To start the HDTV Play application, A message will appear a skin

**Enter registration information**

Enter your name, E-mail, and the serial number for your copy of the program. The serial number is located on the outside of the CD case, or on the receipt page for web purchases. You can also locate the serial number for web purchases in your online order history.

User Name :

E-mail :

Serial Number :  -

## HDTV Player v4.0

Welcome to use all-in-one HDTV Player! Let's see what can HDTV Player do for you?

- Playing HDTV program
- Support H.264 (MPEG4) Video encoder, AAC Audio encoder.
- Realtime record favorite HDTV program
- Schedule record favorite HDTV program
- Live update program list and program guide
- Schedule watch HDTV program at specified time
- TimeShifting, pause watching HDTV program
- Playing teletext broadcasting
- Smart search to quickly locate favorite TV shows or desired TV Show time
- Remind to watch at scheduled time
- Auto & manually scan all available channels
- Smart Stretch lets video smart fit on all monitor, avoid video loss or distortion
- Auto wakeup to perform schedule task at PC hibernation status
- Capture HDTV program video as still image
- Manage favorites program
- Multi-channel preview to quickly access favorite programs






- Playing DVD/SVCD/VCD/CD disc
- DVD bookmark preview to quickly access favorite title/chapter
- Playing most popular media files
- Playing picture as slide show with background music
- Support Microsoft Vista system

## HDTV Player Panel and Function

Main Control Panel:



Button/Icon	Name	Description
	EPG	Open HDTV EPG window
	Play	Play HDTV or Media
	TimeShift/Pause	TimeShift (for HDTV) or pause playback
	Stop	Stop playback
	Record	Record HDTV or DVD
	Previous	Skip to play previous HDTV channel / DVD chapter
	Browse	Browse channel
	Next	Skip to play next HDTV channel / DVD chapter
	Open	Select playback type
	Subtitles	Select Subtitles
	Audio	Select Audio
	Capture	Capture video as .bmp still image
	Volume Control	Drag slider bar to adjust volume
	Mute	Turn on/off audio
	Media Type	Display playback type
	Playback status	Display playback status
	Signal Quality	Display HDTV signal quality
	Signal Strength	Display HDTV signal strength
	Channel/chapter	Display current HDTV channel / DVD chapter
	Time	Display current time of HDTV / DVD

	Fast backward	Fast backward, switch between 1X, 2X, 4X, 8X, 16X at each press
	Slider bar	Drag the slider to new position for playback.
	Fast Forward	Fast forward, switch between 1X, 2X, 4X, 8X, 16X at each press
	Open Floating Panel	Show Floating Panel
	Show Advanced Panel	Show/Hide Advanced Panel

## Operation Guide

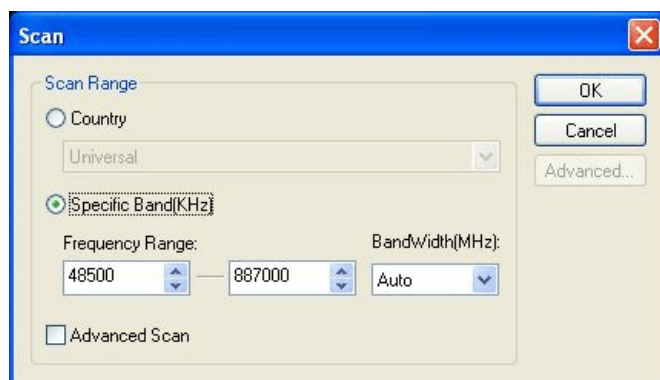
BlazeVideo HDTV Player features very easy usage, below we just guide you through the HDTV operation, for DVD and medial files playback, please refer to the Help file attached with the software.

## Scan Channels

### 1. Auto Scan Channels

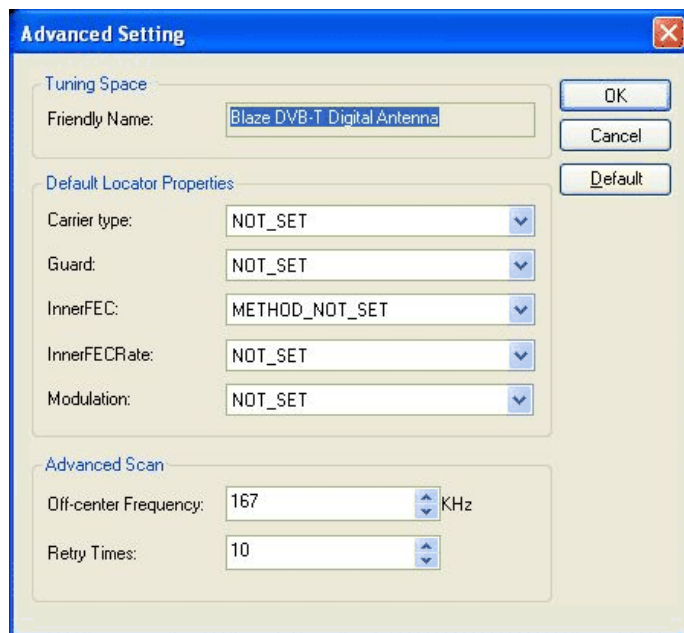
If a HDTV device installed or connected to your PC, and its driver has been properly installed, after launch BlazeVideo HDTV Player, a box will pop up to enquire you whether to scan channels.

Click Yes, the "Scan" box ejects for you to set scan options.





**Advanced Setting:** Check in "Advanced Scan" and click "Advanced..." to popup "Advanced Setting" box, here you can set advanced scan properties.






## 2. Manually Scan Channels

- In TV Advanced Panel click ;
- In EPG\_Channels window click ;
- Go to Options-> DTV window, click "Scan" button under "DTV Source".

### Abort Scanning:


Just press "Abort" button to stop scanning. (It is recommended you finish scanning one time at least).


## Watch Live TV Show


**Select Channel:** In EPG\_Channels window, double click a desired channel; or click  to open channel list to select.

**Switch Channel:** click  or  to switch channel.

**Browse Channel:** Click  to open channel list, all of the channels will be displayed.





**Return to Last Channel:** Click  to resume play the last viewed channel.

**Select Subtitle:** Click  to select your desired subtitle.

**Select Audio:** Click  to select your desired audio.

## Time Shift

TimeShift means you can pause watching a live program to have a break, when you come back you will resume watching from the point at which you paused.

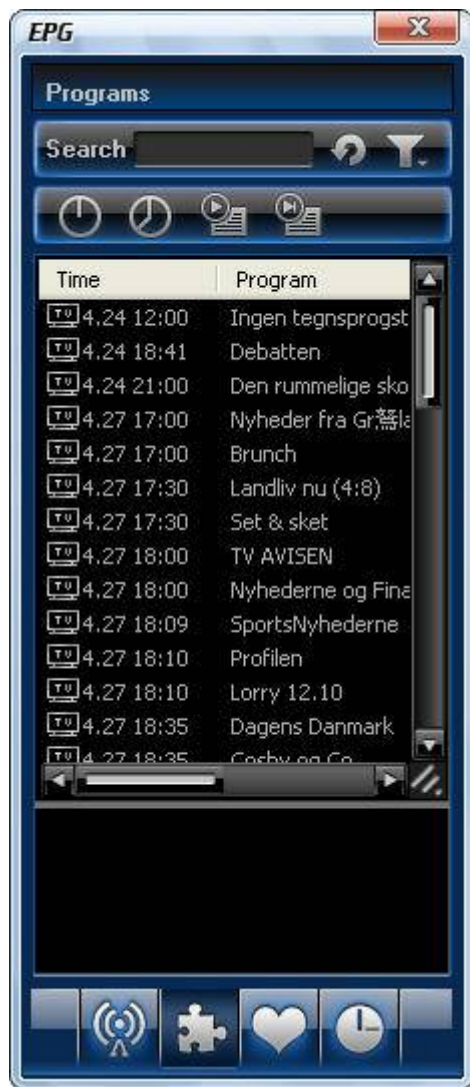
- Click  to pause, The video screen will freeze, but the recording will continue.
- Click  again or click  to continue watching TV show from the point at which it was paused.
- Click  two times to stop TimeShift and return to the live program.




**Note:** The record duration depends on your TimeShift Buffer Size, which can be set in [DTV Setting](#).

## Program Guide


In EPG\_Guide panel, click a program to access program details: program title, start time, end time and program description.




**Smart Search:** Type the start time or keyword of your desired programs in Search box, all the relative program guide will be displayed.

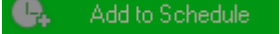
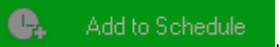
Click , you will clear the search result and resume display all the program guide.

## Live Record TV Show

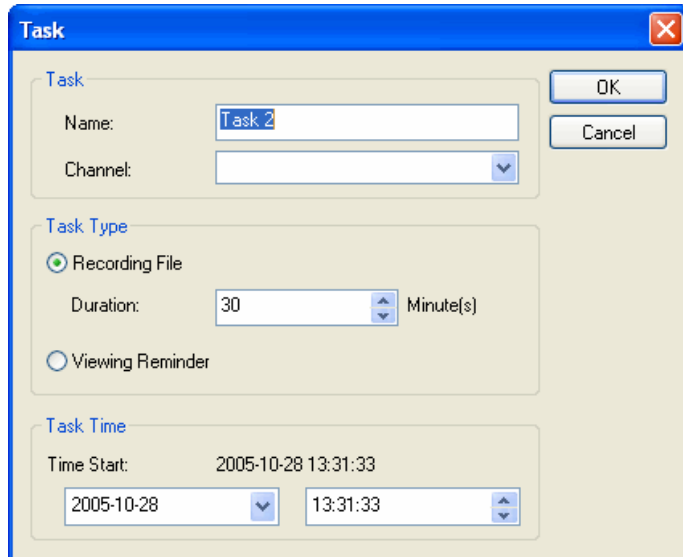
While you are watching a TV show, click  to pop up Record floating panel, you will begin to record live HDTV show into MPEG2 file. You can also stop record, play record or delete record file in this record panel.

## Create Schedule Task

- In EPG\_Schedule window, click  to create a task.

- In EPG\_Channels window, select a program with EPG guide and click .
- In EPG\_ Programs window, right click a program and select "Add to Schedule".
- In EPG\_ Favorite window, select a program with EPG guide and click .

Through one of above steps to create a task and eject below Task box: here you can set task name, task type and task time.



The image shows a 'Task' dialog box with a blue title bar and a close button. It contains three sections: 'Task', 'Task Type', and 'Task Time'. In the 'Task' section, the 'Name' field is set to 'Task 2' and the 'Channel' is an empty dropdown. In the 'Task Type' section, 'Recording File' is selected with a radio button, and the 'Duration' is set to '30' minutes. 'Viewing Reminder' is unselected. In the 'Task Time' section, the 'Time Start' is '2005-10-28 13:31:33', with the date and time components each in their own dropdown menus. 'OK' and 'Cancel' buttons are on the right.

### Auto wakeup to perform schedule task at PC hibernation status:

Your PC can auto wakeup to launch schedule task in hibernation status for power saving, the operation is below:

1. Set schedule task;

2. Hibernate your PC;

Note: To hibernate your PC, you must activate "Enable Hibernation" in your PC's Power Options Properties.

3. Your PC will auto wake up to perform task at the scheduled time.

## Schedule Record TV Show

Following 3.8 chapter "Create Schedule Task", set task type as "Recording File" and set task start time, it will auto record the preset TV show by the task start time, even though you are away from PC or your PC is hibernated.


## Reminded to Watch

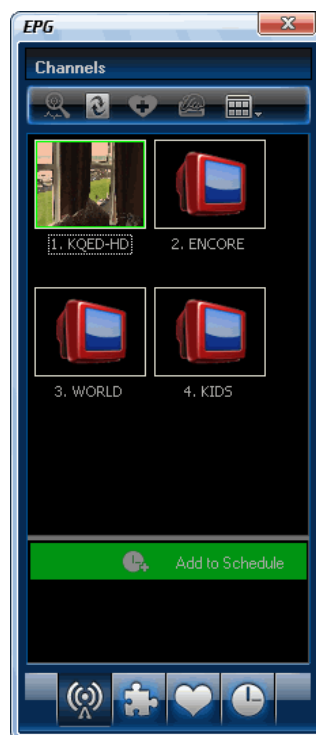
You will be reminded to watch TV show at the schedule time, thus you will never miss any of your favorite

program.


Just set Task Type as Viewing Reminder when you create schedule task. The other operations are as schedule record TV.

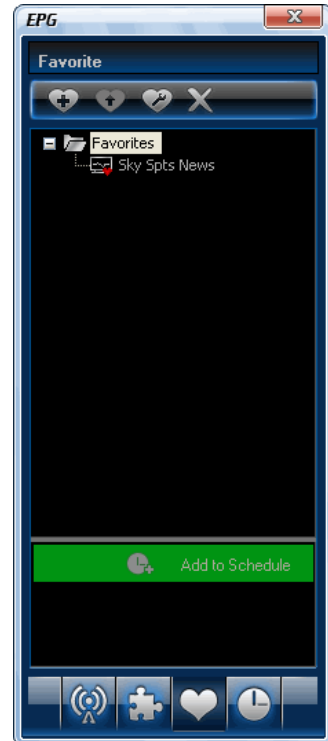
## Multi-channel Preview

- **Preview while scanning channels:** Tick "Preview found channels" box while scanning channels, each found channel will sequentially display on video window.
- **Multi-channel preview in EPG window:** Click  in EPG\_Channels window to refresh channels, each program will display on video window by sequence, after refresh finishes, all programs' snapshot will be listed in EPG\_Channels window. Double click a program, you will directly playback it.



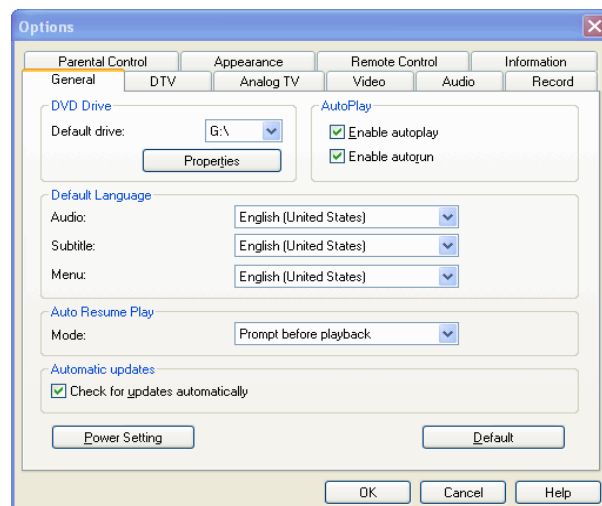
## Favorite Management

- **Add to favorite:** In EPG\_Channels window, select a channel and click  or right click to add favorite.
- **Watch favorite channel:** double click the favorite channel to directly watch this channel's program.
- **Favorite management:** in EPG Favorite window, you can freely create, rename, change or delete favorite folder.

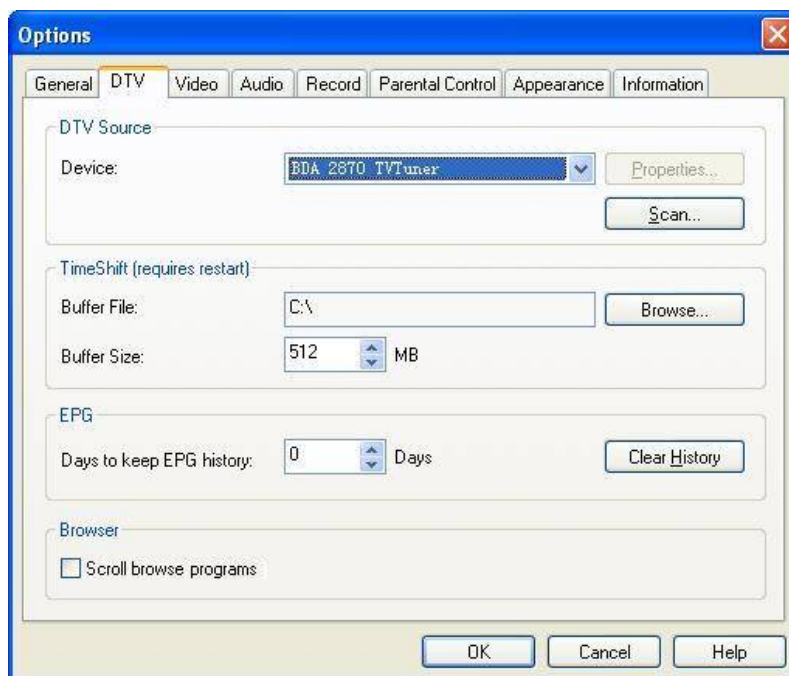


## Settings

Right click Video window and click Options, you will open Options box for advanced setting, below we just take DTV and Record setting as examples.




## DTV Setting

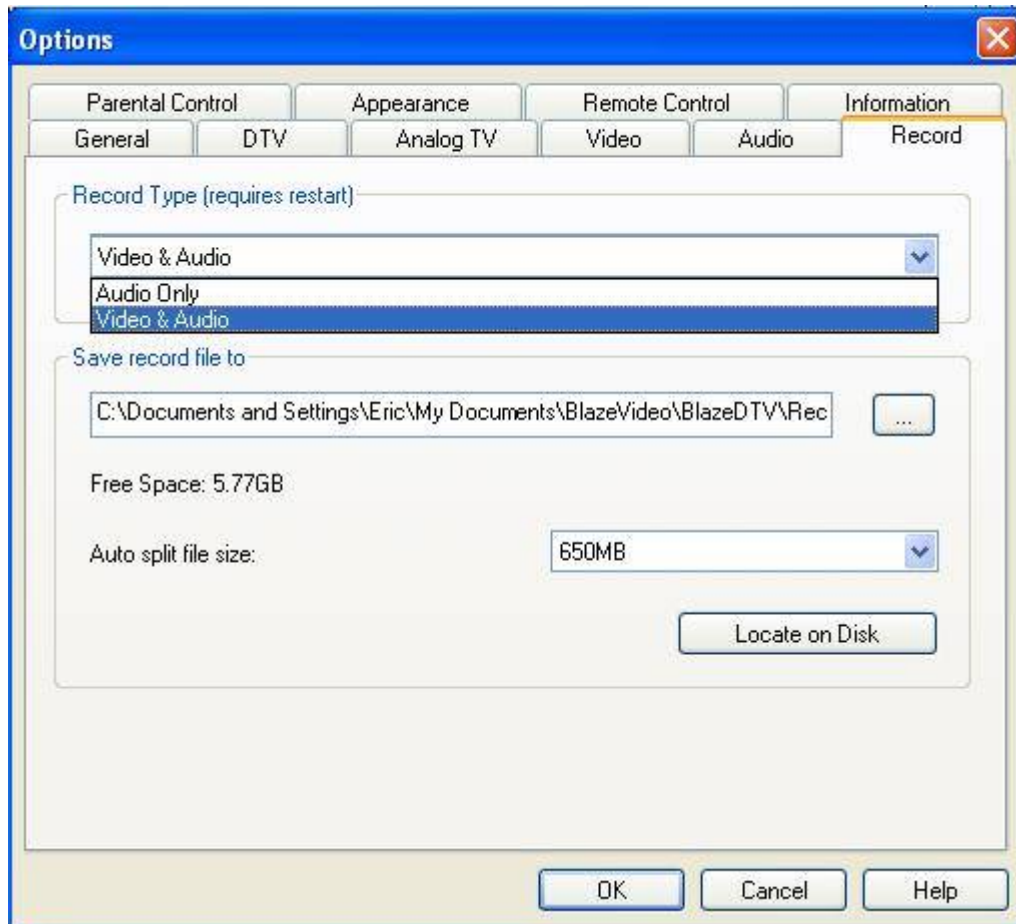


- **Device:** If HDTV device installed or connected to your PC, the device name will display. a
- **Scan:** click to launch channel scanning
- **TimeShift:**
  - **Buffer File:** display the directory of buffer file, please select a directory with large enough space.
  - **Buffer Size:** Hard disk size for buffer and saving paused programs, the bigger size, the longer time of saving program.

**Note:** After you change the buffer file or buffer size, please restart the program to activate the change.

- **Days to keep EPG history:** Set the days to keep the EPG history, maximum 7 days to keep EPG history.
- **Clear History:** Delete the EPG history.
- **Scroll browse programs:** Selected to scroll browse programs after click 

## Record Setting



### Record Type:

- Audio Only: only record HDTV show/DVD movie audio
- Video & Audio: record DVD with video and audio

**Save Record File to:** Specify the path to save the record file

**Locate on Disk:** To quickly open the record file's folder

### Package Includes:

- 1) USB DVB-T Receiver
- 2) Portable DVB-T antenna
- 3) Remote Control
- 4) Software and driver CD



## Environmental recommendation

An electrical/electronic product should be disposed of in a manner that minimises environmental impact as much as possible. The device should be disposed of according to local guidelines. The device can usually be disposed of at the local recycling station.



### *The WEEE Directive*

The directive on waste electrical and electronic equipment (WEEE), which became European law on the 3th of February 2008, has led to a radical change in the handling of waste electrical and electronic equipment. First and foremost, the purpose of this directive is to reduce WEEE and also to promote recycling, reuse and other types of recovery of this type of waste in order to reduce the amounts for disposal.

The WEEE logo on the product or on its packaging indicates that this product should not be treated as household waste. You are responsible for handing over all your electrical or electronic waste to the applicable collection points for the recycling of this type of hazardous waste. Separate and correct recovery of your electric and electronic equipment when it is discarded contributes to conservation of natural resources. Furthermore, correct reuse of electric and electronic waste contributes to the protection of human health and the environment.

For more detailed information about disposal of electric and electronic waste, recycling and collection points, please contact your local city government, your household waste disposal service, the shop where you purchased the product or the manufacturer of the product



### *The RoHS Directive*

On July 1, 2008, the RoHS Directive ([www.thiim.com/pdf/rohs.pdf](http://www.thiim.com/pdf/rohs.pdf)) (2002/95/EC) came into effect. The aim of this Directive is to limit the use of hazardous substances in electrical and electronic equipment and to contribute to human health protection as well as environmentally sound utilization and disposal of electrical and electronic waste

## Guarantee

### **The guarantee is invalid**

- If the above is not observed.
- If the device has been abused, exposed to force or other type of damage.
- If there has been any unauthorized intervention in the device.

